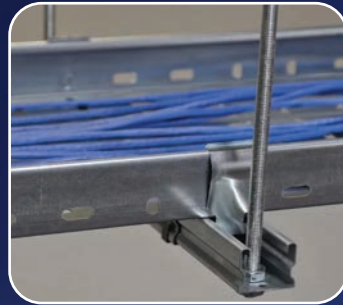
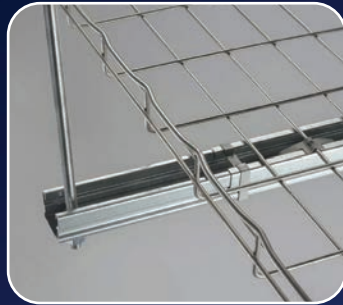


# LV JUICE

# Caddy Telescoping Struts

*Reliability You Deserve*

The Telescoping Strut is an innovative alternative to using traditional strut channels for trapeze or other support structures that accommodates standard strut fittings. This telescoping solution eliminates the need to handle and cut long lengths of strut to size. It easily adjusts to the desired length and is locked in place by snapping closed a spring retainer clip.



## FEATURES

- ✓ Standard strut profile runs the entire length of the part, allowing most standard fittings to be placed anywhere between the rods
- ✓ Spring steel retainer strap can be manually locked into place, allowing a tool-free installation
- ✓ Ready to use out of the box and eliminates the need for cutting sections of strut
- ✓ Pre-cut design is easier to transport and store than standard lengths of strut

## SPECIFICATIONS

- ✓ Material: Hot Dip Galvanized Steel
- ✓ Length between mounting holes: 318-508mm
- ✓ Overall length: 356-546mm
- ✓ Load Rating: 88Kg





# Whatever the situation, we've got a solution!

With a smart modular design, several Class options for lids, a huge size range with risers to increase depth and the ability to accommodate many different utilities with any manner of connections, metering, switching, fusing and more, TUDS Modular Pits are the answer – every time!



## FEATURES

- ✓ Lightweight – up to 90% lighter than the concrete alternative
- ✓ Strong – tested in accordance with AS3996:2019
- ✓ Massive size range – **up to 1200x1200mm square**
- ✓ Various lid options available
- ✓ No special tools
- ✓ Fast & Simple assembly – from flatpack to built in 3 minutes
- ✓ Popular sizes in stock
- ✓ Flatpack supply makes for 76% space saving for freight and storage
- ✓ The perfect underground vault for any utility application





## MULTI-COMPARTMENT TOOLBOXES

### Organise with Ease

These handy toolboxes are easy to carry with a solid handle and carry strap, and feature removable compartments. Replacement boxes in three sizes are available if you need to reconfigure your toolbox storage sizes.

CAT NO.	DESCRIPTION
BOX366	TOOLBOX 12 COMPARTMENT: 6 x BOX-A, 4 x BOX-B, 2 x BOX-C
BOX399	TOOLBOX 18 COMPARTMENT: 18 x BOX-A
BOX-A	REPLACEMENT BOX WITH PARTITION: 95x65x65mm
BOX-B	REPLACEMENT BOX WITH PARTITION: 140x65x65mm
BOX-C	REPLACEMENT BOX WITH PARTITION: 290x65x65mm



## TNERIB - EARTH ROD INSPECTION BOX

### Ensure Safe and Secure Installations

Main earth connections are an integral part of a safe installation, and need to be accessible but also protected to ensure the integrity of the connection isn't compromised. The best way to do this is to cover it with a purpose-build inspection box.

#### FEATURES

- ✓ Heavy Duty strengthened, hinged and latched lid
- ✓ Made from UV stabilised material
- ✓ Square to easily fit into paving work
- ✓ Easy to identify with embossed lid detail
- ✓ Extensive rain water access
- ✓ Designed and manufactured in NZ



120mm X 120mm X 200mm tall



# Premium Nylon Hose Clamps

Designed and manufactured by HCL to the highest quality. The Ezyclamp™ is a highly versatile Nylon Worm Drive Hose Clamp. It is **12.7mm wide** and available in 5 sizes covering a **diameter range of 25mm to 150mm**.

## FEATURES

- ✓ No Metal Parts – Non-Corrosive, Non-Magnetic, Non-Conductive
- ✓ Made in the United Kingdom
- ✓ Safe to fit – no sharp edges
- ✓ Excellent resistance to Weathering & UV
- ✓ 8mm Hex Screw fastener
- ✓ No Specialised Tooling Required
- ✓ Minimal Leak Path – forms almost Perfect Circle
- ✓ Manufactured to DIN3017 Standard
- ✓ Smooth Underside
- ✓ Bevelled Edges Protect Hose
- ✓ Exclusive Housing Design



FIND OUT  
MORE

To Order use Cat No. matrix below:

PWD-13-xx-SC-PA12-BK  
xx = size (50, 75, 100, 125, 150)



*Insert screw into housing*



*Push screw into end of housing*



*Wrap around the hose*



*Wrap around the hose*



*Pull the band tight*



*Insert screw into housing*



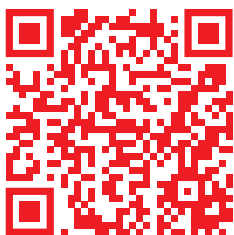
# Cool Off with Arc Armour

8.7 Cal  
HRC2/PPE2

## The leading lightweight Arc Rated Work Gear

### FEATURES

- ✓ Very lightweight - cool to wear
- ✓ 215gsm Woven Lenzing Blend proprietary fabric
- ✓ Rugged & durable
- ✓ Premium Grade HRC2/PPE2
- ✓ Arc Rating 8.7 Cal HRC2/PPE2
- ✓ NFPA 70E compliant
- ✓ Rating clearly visible
- ✓ Inherently Flame Retardant, Anti static and Arc Flash Protection
- ✓ Adjustable cuffs & zip gusset
- ✓ High tensile strength fabric
- ✓ 2 way Non-conductive zips



FIND OUT MORE



**RANGE INCLUDES**

*Overalls, Jackets & Cargo Pants*





# TE Cable Clamps - Single and Trefoil

Polymeric flame-retardant V0 material strong mechanical performance for high protection



## FEATURES

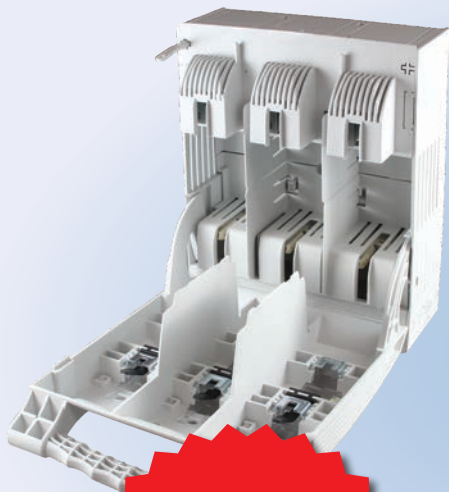
- ✓ Made from impact-resistant, UV-stabilized, polymeric flame-retardant V0 material for use in harsh environments
- ✓ High resistance to electromechanical forces
- ✓ Strong mechanical performance due to innovative rib design and glass fibre reinforced material
- ✓ Easy and fast installation thanks to simplified design
- ✓ Flat surface design allows stacked configuration without an adapter
- ✓ Interlocking EPDM moulded inserts version for increased asset protection
- ✓ SS304 hardware for higher corrosion resistance and mechanical performance
- ✓ Range taking to fit cables up to 75mm (Trefoil) and 135mm (Single)



AUTHORISED DISTRIBUTOR



## Superior Safety, Durability, and Performance



*Performance  
You Can  
Count On*



### PRODUCT FEATURES

- ✓ Thermoplastic parts made of fibre glass strengthened polyamide, with halogen-free flame retardant added and with the highest possible flammability class -V0
- ✓ Conductors with lug terminals or bars
- ✓ Arc chutes with steel deionization plates over top contacts
- ✓ Silver plated contacts provide low power loss
- ✓ 316 Stainless Steel or GEOMET® 321coated components (optional for applications in corrosive environments)
- ✓ Large test holes to accommodate CAT IV rating requirements
- ✓ Can accommodate up to two cables per phase

### HEALTH & SAFETY FEATURES

- ✓ Security sealing point is replaceable
- ✓ Full segregation between phases to reduce the risk of accidental contact
- ✓ Comes complete with terminal covers
- ✓ Terminal covers can be extended if multiple connections are made
- ✓ Arc chute extinguishers are standard on all RBK pro models

### STANDARDS

- ✓ IEC/EN 60947-1
- ✓ IEC/EN 60947-3





# IANZ ACCREDITATION

## FOR TRANSNET HV TEST LAB



### Auckland

78 Cryers Road  
East Tamaki  
Auckland  
NEW ZEALAND  
Ph 0800 442 182  
PO Box 39 383  
Howick, Auckland

### Wellington

10 Petone Ave  
Petone  
Wellington  
NEW ZEALAND  
Ph 04 576 2530  
PO Box 39 383  
Howick, Auckland  
NEW ZEALAND  
sales@transnet.co.nz

### TransNet Tonga

#### Nuku'alofa

Lakalakaimonu Multi Utility  
Complex  
Taufa'ahau Road  
Poutaha  
Nuku'alofa  
TONGA  
Ph +67 627 939  
PO Box 2932  
Nuku'alofa  
TONGA  
transnet@kalianet.to



We're thrilled to announce a major milestone for our team: our High Voltage (HV) Test Lab has been **officially accredited by IANZ** (International Accreditation New Zealand).

This achievement is the result of tremendous effort and expertise from our dedicated HV Test Lab technicians. It places us among an elite group of organizations in New Zealand, trusted to deliver IANZ-certified testing services. Our on-site IANZ-accredited lab is designed to provide consistently reliable test results with an exceptionally fast turnaround. This empowers our customers to maintain leaner inventories of insulating PPE without compromising safety or compliance.

As part of this commitment to excellence, **all new insulating PPE\* purchased from TransNet comes fully tested at no additional cost.** We also offer periodic testing services to ensure your PPE remains compliant and ready for use. This accreditation reflects our ongoing dedication to providing innovative, dependable solutions for our customers' safety and operational efficiency.

\*please contact our customer care team to find out more about the products included in this offer.

TransNet NZ Ltd has made every reasonable effort to ensure the accuracy of this information and it is to the best of our knowledge correct and reliable. Under no circumstances does this constitute an assurance of any particular quality or performance and users should independently evaluate the suitability of products for their desired application. All information in this publication including pricing, drawings, illustrations, images and graphic designs are reflections of our current understanding. TransNet NZ Ltd reserves the right to make any adjustment to this information at any time. Our liability for the products outlined in this publication is set forth in our standard terms and conditions of trade. In case of any potential ambiguities or questions, please contact us for clarification.

